



Case Study



LT McGuinness construction site hoardings at Victoria University

Project Overview

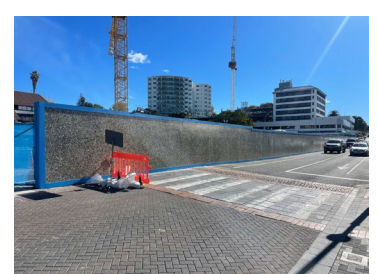
The Living Pā is an ambitious new building being constructed for Te Herenga Waka - Victoria University of Wellington. For building contractor LT McGuinness, sustainability is a core driver at the heart of this project, and they are utilising the Living Building Challenge as a framework to achieve this. The Living Building Challenge is an international certification based on seven performance areas – place, water, energy, health + happiness, materials, equity, beauty – and administered by the International Living Future Institute. Some of the targets the project is required to meet include producing 105% of its required energy on-site with renewable power, only using water collected on site, low carbon design, and very ambitious waste reduction targets averaging at 95% diverted from landfill.

Client: LT McGuinness Building Contractors

Project Address: 42 Kelburn Parade, Wellington

saveBOARD Products Specified:

[Multi-Use Panel 12mm](#)



Why the client chose saveBOARD

“With sustainability being at the forefront of this project, we wanted to showcase this through our construction hoardings around the boundary of the site that protect and secure the site. saveBOARD is a full circular product that solves issues with difficult-to-recycle materials. It is low carbon in its construction, durable, and we can send it back to be recycled into new product at the end of its life – something we can't do with plywood hoardings.”



Save the Environment

“LT McGuinness has become one of New Zealand's first net carbon-zero certified building contractors. Our plan is to address our direct impact and to make significant improvements by using lower embodied carbon materials and construction methods, like using multi-use saveBOARD panels for our site hoardings.”

Performance & Functionality

“With the built environment contributing up to 15% of New Zealand's greenhouse gas emissions and up to 50% of waste to landfill, LT McGuinness wants to lead the way in reducing those numbers to zero and we have developed a plan to do this including reducing our carbon footprint to zero; building with lower embodied carbon and less waste; and partnering with clients towards a lower-carbon future.”

Added Value

“The biggest added value is the conversations that using saveBOARD as hoardings starts with our clients. As it looks inherently different, people are curious, and keen to learn more about the product, which is a win-win for everyone.”

Circular Economy Solution

“LT McGuinness is keen to contribute to the circular economy as much as possible, working with partners such as saveBOARD and Future Post, to purchase circular materials, and recycle some hard-to-process waste products we end up with. Other initiatives include utilising take-back schemes where possible, and encouraging concrete to be recycled. We are constantly researching to find solutions to divert waste for the many types of materials we use.”



About saveBOARD

saveBOARD is focused on building a circular economy by turning composite packaging waste back into products that re-enter the local supply chain eliminating future waste. We have two plants; one in Hamilton New Zealand and one in Western Sydney, Australia.

The core of the product is made from 100 % recycled shredded and compressed composite packaging, giving the user a sustainable and superior performing product. Can be specified with timber or steel framing.

Finished with either a recycled facing paper (Paperfaced), fibreglass face (betterBRACE) or transparent top surface (Exposed, Ceiling Tiles, Multi-use). All products have a recycled paper facing on the bottom surface. saveBOARD products are alternatives to plywood, OSB or plasterboard.



Declare

Declare is a database of non-toxic, sustainably sourced building products that meet the stringent requirements of the International Living Future Institute's Living Building Challenge.

Considered the most advanced sustainability certification in the built environment, Declare is like a nutritional label for building products, offering specifiers, contractors and building users insight into the ingredients used in the manufacture of building products. Click on the following link to see the saveBOARD current Declare label <https://declare.living-future.org/products/saveboard>

