



Multi-Use (internal wall lining application)



Installation Guide Australia

Product Description

saveBOARD Multi-Use panel is a semi vapour permeable structural composite panel made from 100% shredded and compressed post-consumer composite packaging and soft plastics. No water, glues, resins are used during the manufacture process. saveBOARD Multi-Use is finished with a clear (white or black) recycled plastic face and recycled paper back.

Not Perfect

saveBOARD products are made from 100% recycled waste and as such are not perfect. The dimensional tolerance is + / - 1mm and the weight + / - 10%/sheet.

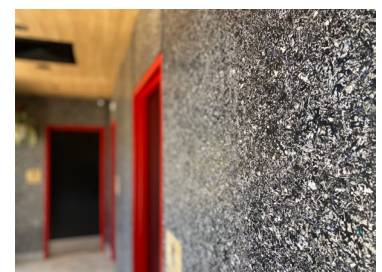
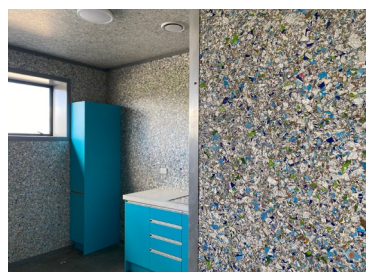
The surface of Multi-Use may have veins or press marks, the paper backing may be have creases and some air bubbles may be evident.

The colour will vary slightly from batch to batch due to the varying nature of the raw materials to manufacture saveBOARD, namely recycled waste. The colour may also vary slightly from a sample.

These are standard characteristics of a saveBOARD product. More information can be found here on the website. Link [Not Perfect | saveBOARD – Sustainable Building Materials](#)

Scope of Use:

- As an internal wall lining or partition in ventilated industrial spaces (ie sheds/warehouses)
- On timber or steel framing
- Where Materials Group 3 Fire rating is required.



Limitations:

- Not suitable for wet areas – shower rooms specifically.
- Not recommended in confined spaces (made from post-consumer waste may have a slight odour)
- Do not use in permanent exterior applications (can be used as a temporary hoarding).
- Check compatibility with any glues, resins sealants or building wraps to be used in conjunction with Multi-Use
- Framing to be at a moisture content < 16% before internal linings are applied. This is a saveBOARD warranty requirement.

Handling

When manually handling saveBOARD Multi-Use ensure the panels are lifted correctly. For safety, we recommend a minimum of 2 people.

Storage

When stored internally on-site lay flat on suitable bearers. The spacing between the bearers should be no more than 600mm apart.

When stored externally on-site, there must be a minimum of 50mm clearance from the ground and water sources. If delivered sheets are stored outside prior to use they MUST be covered with temporary waterproofing.

It is good to trade practice to allow sheet materials to climatize to the site conditions for 48 hours prior to Installation.

Maintenance & Warranty

Multi-Use panels are inherently mark resistant, durable and suitable for high impact areas with a wipe down surface.

Please refer to the Maintenance & Warranty (15yrs) documents on the saveBOARD website www.saveBOARD.com.au

Installation Instructions:

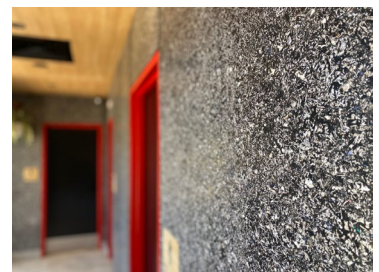
Working safely with saveBOARD

All saveBOARD products are safe to work and live with. All saveBOARD products are Volatile Organic Compounds (V.O.C.'s) and formaldehyde free.

saveBOARD can be cut, drilled, and sanded in the same manner and methods as most wood-based products.

Cutting saveBOARD does not create any toxic dust, vapors, or other potentially harmful inhalants, but we recommend you always follow Health & Safety best practices.

A Material Safety Data Sheet is available on the website www.saveBOARD.com.au



Cutting & Drilling

saveBOARD Multi-Use can be cut in the same manner and methods as most wood-based products with a hand saw or power tools.

Cut boards upside down so skill saw leaves a clean cut on front face. We recommend using a fine tooth carbide tip saw. Sand back edge with 150grit paper.

T.I.P. – Allow the hole saw to cut. Do not apply excessive pressure as this may damage the back of the board upon exit.

Framing

All support timber framing should comply with relevant Australian code or Specific Engineering Design (S.E.D.) requirements. There are two framing options:

- 600mm Stud centres: Minimum is 90 x 45mm timber framing recommended by saveBOARD, or
- 400mm Stud centres: Minimum is 70 x 35mm timber framing recommended by saveBOARD.

All steel support framing shall comply with NASH Standard Part 2:2019 Light Steel Framed Buildings or S.E.D.

We recommend a 2-4mm vertical gap between sheets to allow for thermal expansion during periods of high humidity (summer).

Installing on to Walls

Install the boards vertically and plumb, ensuring that the sheet edges have a minimum of 18 mm edge cover over the framing. Install with a 6 mm–10 mm clearance above the finished floor level when skirting boards are to be used. Ensure all wall insulation is installed back or flush from the framing face to be lined.

On a timber frame use 40 mm panel pins or 6 g screws at 150 mm centres around the sheet perimeter and 300 mm centres through the body of the sheet for non-structural applications.

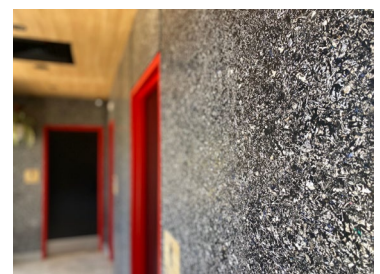
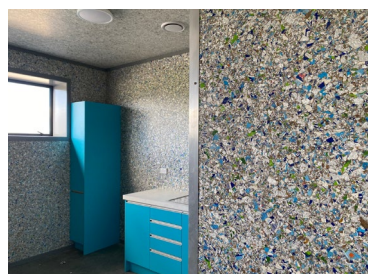
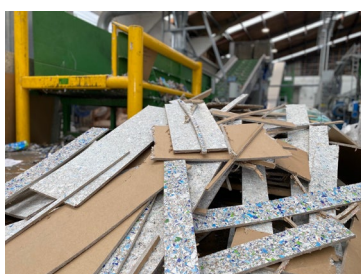
For lightweight steel frame use self-drilling 8–10 g countersunk screws at 150 mm centres around the sheet perimeter and 300 mm centres through the body of the sheet for lightweight steel framing.

If over fixing an existing wall lining, use 'liquid nails' at 150mm centres + brad nails to hold board onto surface, while the glue sets.

General

Heat Do not install the boards adjacent to, or behind a heat source.

Adhesives Common structural adhesives can be used in small daubs at 300 mm centres on the central studs for structural and non-structural board installations. An aluminum or plastic jointer may be used for aesthetic purposes. Check compatibility.



Jointing

Refer to our Jointing Guide that can be found on <https://www.saveboard.com.au/technical-literature>

Jointing Type	Instructions
Negative Detail	2mm to 10mm gap. Paint studs and the exposed edge of the board in chosen colour. Arris Edge
Butt Join	Cut boards upside down so skill saw leaves a clean cut on front face. Sand back edge with 150grit paper. Non- Structural fixings - Fix with glue and finishing gun 35-40mm panel pins or collated drywall screw gun. Structural fixings – Refer to approved bracing screw fixing pattern. The butt joint on Exposed internal lining can be sealed by applying or clear Selloys 'Liquid Nails' or 'Amazing Goop' contact adhesive. Note: We recommend a 2-4mm gap between sheets to allow for thermal expansion during high humidity periods (summer) or similar.
Butt Join with Extrusion	Butt join as above, finish with a T-Bar or chosen extrusion fit for purpose.

For more information refer to our website: www.saveBOARD.com.au

